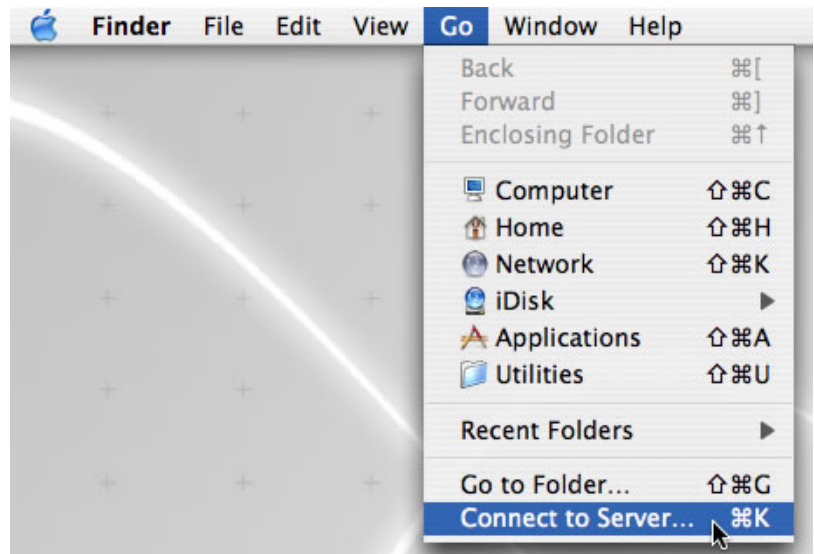


## Accessing your Network Storage From a Mac using OS X

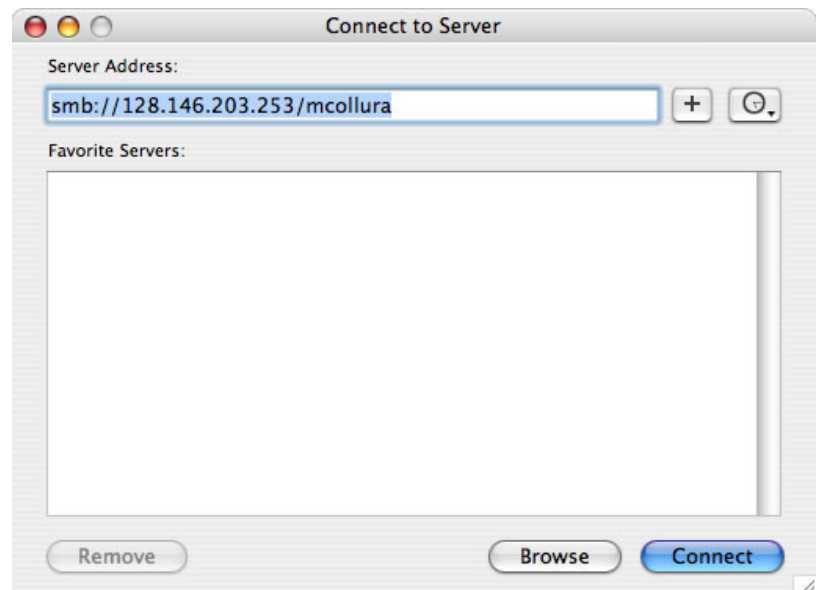
1. Click on the Go menu and select Connect to Server...



2. Enter the server address of the network storage in the space provided using the first letter of your first name followed by your last name (see below).

<smb://128.146.203.253/mcollura>

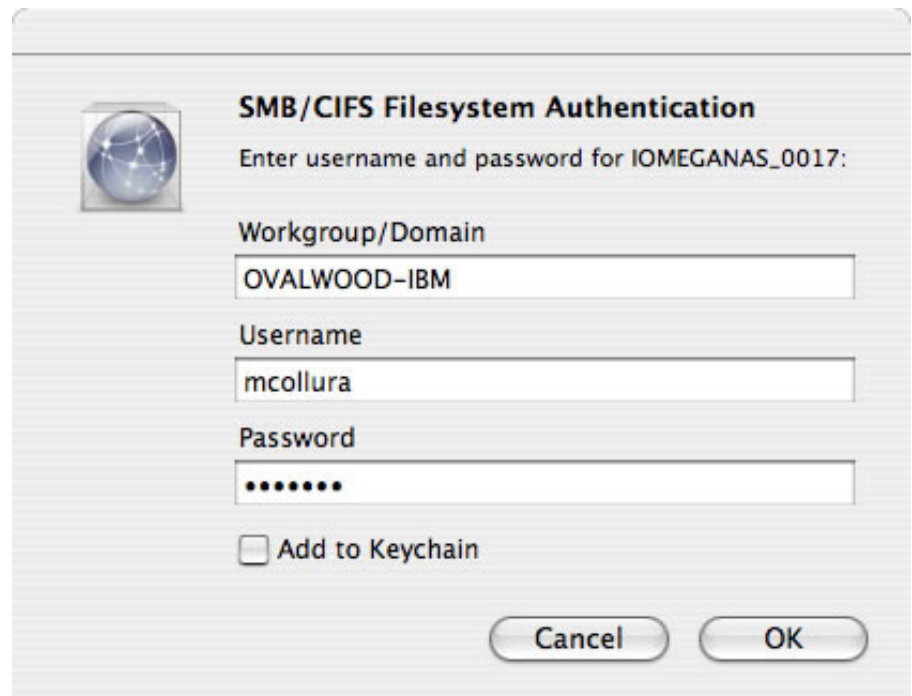
Click Connect.



3. You will then be prompted for a username and password as pictured below. In the Username box enter the first letter of your first name followed by your last name just like you did above.

John Ferguson maintains the network storage and corresponding accounts. If you currently have an OSU Mansfield web site, it's the same username and password. If you don't have a website or you don't remember the password contact John ([ferguson.110@osu.edu](mailto:ferguson.110@osu.edu)).

Click OK.



4. An icon (similar to the one at the right) with your username will now show up on your desktop. Double-click the icon to open. Copy any files to that drive that you would like to use in the classrooms. From the computer on the multimedia unit use the instructions for Accessing your Network Storage From a PC using Windows XP and you can retrieve the files to use in class. You can also use this space to manually backup any important data.

